



Montreal • New York • Maryland • Minneapolis



QuickPikSM

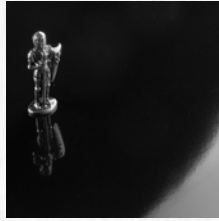
Reference Guide



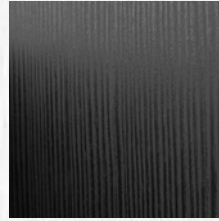
Finishes



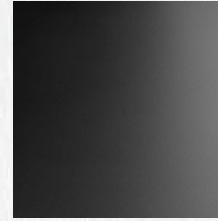
DL = Deep Line



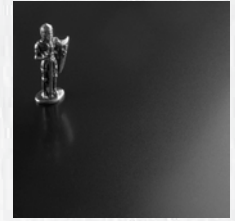
GL = Gloss



LG = Legno



M = Matte

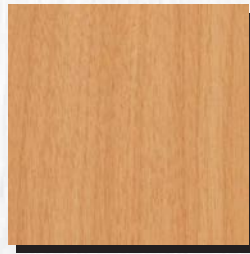


PL = Polished

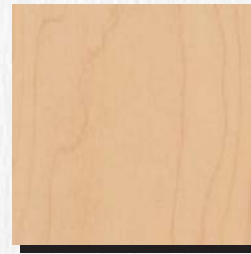
Wood Grains



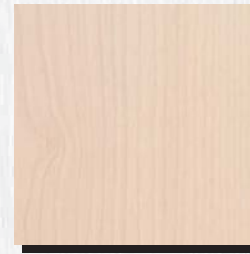
0314 : Walnut
Stocked Finishes : M



0470 : Ash
Stocked Finishes : M



0791 : Hardrock Maple
Stocked Finishes : M



1322 : Bleached Maple
Stocked Finishes : M



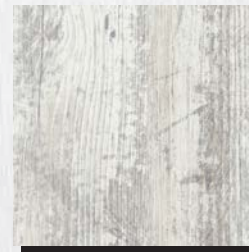
1460 : Mahogany
Stocked Finishes : M



1461 : Larice 3D
Stocked Finishes : DL



1463 : Country Oak
Stocked Finishes : DL, M



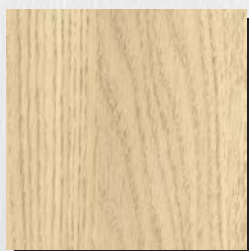
1464 : Larice Rustico
Stocked Finishes : DL, M



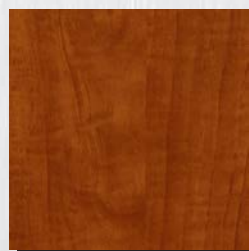
1465 : Grey Cedar
Stocked Finishes : DL



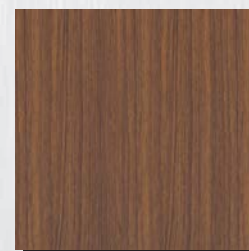
1466 : Zebra Ebano
Stocked Finishes : DL, M



1467 : Lineal Oak
Stocked Finishes : DL, LG



1485 : Cognac Maple
Stocked Finishes : M

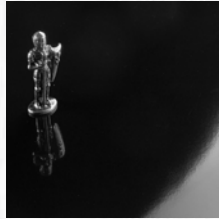


1800 : Dark Teak
Stocked Finishes : GL, M

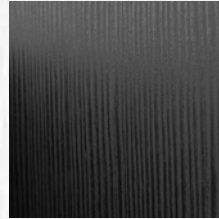
Finishes



DL = Deep Line



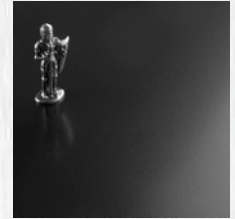
GL = Gloss



LG = Legno



M = Matte

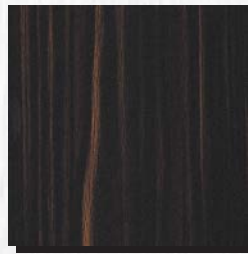


PL = Polished

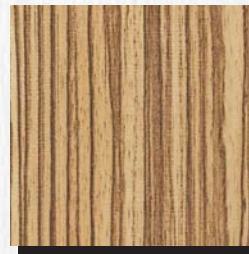
Wood Grains



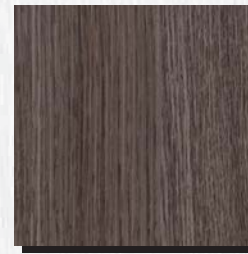
1808 : Chocolate Oak
Stocked Finishes : DL, LG, PL



1809 : Zebrawood
Stocked Finishes : GL



1810 : Zebrano
Stocked Finishes : LG, M



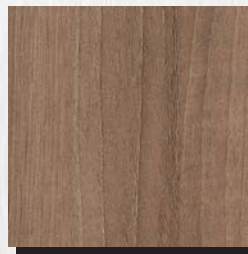
1829 : Grey Oak
Stocked Finishes : DL, LG



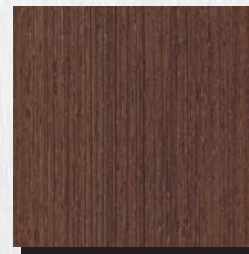
1830 : Cafe Oak
Stocked Finishes : M



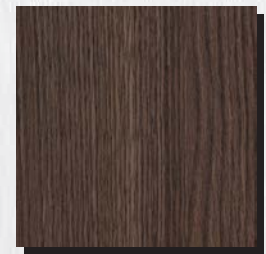
1831 : Zebra
Stocked Finishes : LG, PL



1832 : Noce Caffe Latte
Stocked Finishes : DL, LG, M



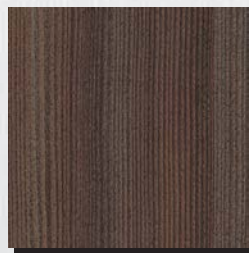
1834 : Wengue Tabacco
Stocked Finishes : DL, LG, M



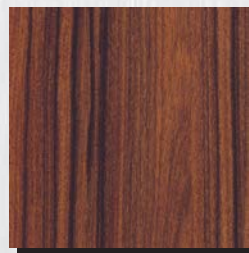
1836 : Brown Oak
Stocked Finishes : M



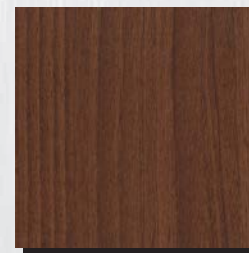
1837 : Vernice
Stocked Finishes : DL, LG



1838 : Alerce
Stocked Finishes : M

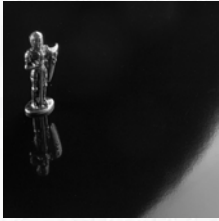


1839 : Palisander
Stocked Finishes : M



1841 : Noce
Stocked Finishes : M

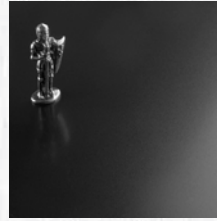
Finishes



GL : Gloss



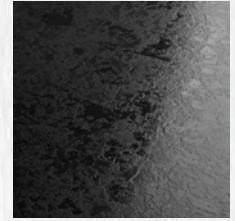
M : Matte



PL : Polished



PT : Pietra

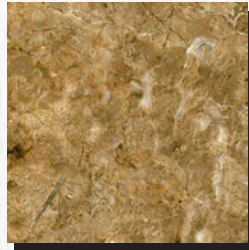


SP : Splendor

Granites & Patterns



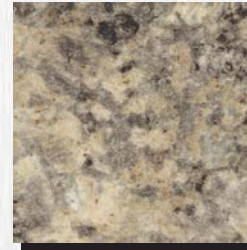
2716 : Pietra Adobe
Stocked Finishes : M, PT, SP



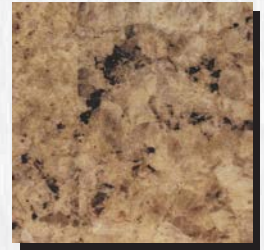
2718 : Pietra Ambar
Stocked Finishes : M, PT, SP



2719 : Pietra Glaze
Stocked Finishes : M, PT, SP



2723 : Granitto Baltic
Stocked Finishes : GL, PT, SP



2724 : Granitto Fossil
Stocked Finishes : GL, SP



3033 : Granite Coffee
Stocked Finishes : GL, PT, SP



3034 : Granite Chocolate
Stocked Finishes : GL, PT, SP



3038 : Blackstone
Stocked Finishes : GL, PT, SP



3049 : Stucco Nero
Stocked Finishes : PL, PT, SP



3095 : Oxide
Stocked Finishes : M, PT, SP



3113 : Alcantara
Stocked Finishes : GL, SP



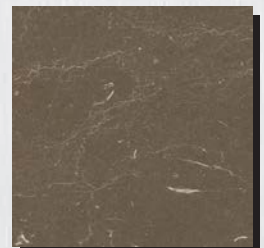
3115 : Marrone Imperial
Stocked Finishes : GL, SP



3116 : Terra Steel
Stocked Finishes : M, PT, SP

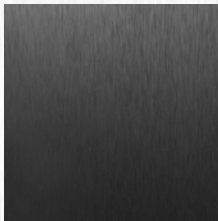


3117 : Cold Steel
Stocked Finishes : M, PT, SP

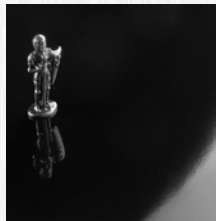


3118 : Marquina
Stocked Finishes : M, GL, SP

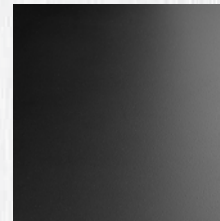
Finishes



BR : Brushed



GL : Gloss



M : Matte

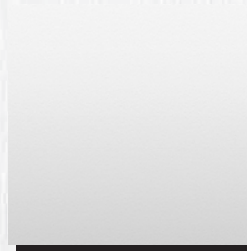
Metallics



1100 : Aluminum Brushed
Stocked Finishes : BR



1101 : Stainless Aluminum Brush
Stocked Finishes : BR

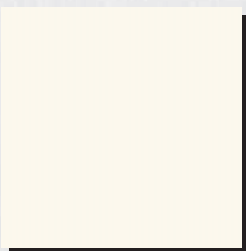


2034 : Silver Matte
Stocked Finishes : M

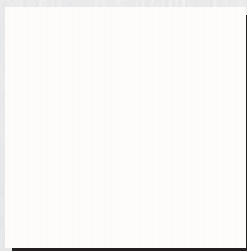


2047 : Metalized
Stocked Finishes : BR, M

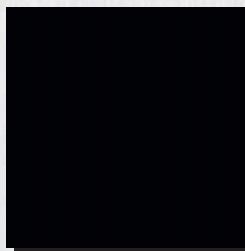
Solids



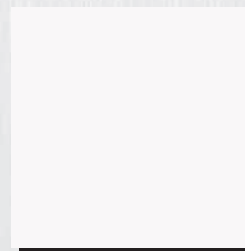
0103 : Neon White
Stocked Finishes : M



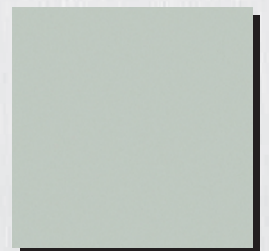
2109 : Vanilla
Stocked Finishes : GL, M



2110 : Cinder
Stocked Finishes : M



2114 : White
Stocked Finishes : GL, M



2177 : Glass
Stocked Finishes : GL

Tech.Specs

*NEMA LD.3/EN-438 STANDARD METHOD	LAMINATE TYPE	PROPERTY	UNITS	HORIZONTAL GENERAL S Grade 70			HORIZONTAL GENERAL PST-F. Grade 50			VERTICAL GENERAL PST-F. Grade 30			VERTICAL GENERAL S Grade 10		
				LAMITECH®	NEMA LD.3	EN 438	LAMITECH®	NEMA LD.3	EN 438	LAMITECH®	NEMA LD.3	EN 438	LAMITECH®	NEMA LD.3	EN 438
				F12	HGS	HGS	PF10	HGP	HGP	PF8	VGP	VGP	F6	CL	
3.1.5 / 5	NOMENCLATURE	NOMINAL THICKNESS		0.048 (1.20)			0.039 (1.0)			0.028 (0.7)			0.020 (0.5)		
		THICKNESS TOLERANCE	In (mm.)	+/-0.005 (+/- 0.12)			+/-0.005 (+/- 0.12)			+/-0.004 (+/- 0.10)			+/-0.002 (+/- 0.05)		
3.1 / 4	APPEARANCE			Not A,B,C, defects			Not A,B,C, defects			Not A,B,C, defects			Not A,B,C, defects		
3.13 / 10	WEAR RESISTANCE	Initial Point (Cycles - min.)		350	-	150	350	-	150	350	-	50	350	-	50
		Total Wear (Cycles - min.)		600	400	350	600	400	350	600	400	150	600	50	150
3.13 / 17	DIMENSIONAL CHANGE	Direction Machine	% max.	0.30	0.50	0.45	0.40	1.10	0.55	0.60	1.10	0.75	0.50	0.80	NA
		Cross Machine	% max.	0.55	0.90	0.90	0.70	1.40	1.05	0.90	1.40	1.25	0.80	1.30	NA
3.5	BOILING WATER RESISTANCE (Tea Pot)	effect		NE	NE	NA	SL	SL	NA	SL	SL	NA	NE	NE	NA
3.6 / 16	RESISTANCE TO DRY HEAT (Hot Pot-180°)	Gloss Finish (effect)		SL	SL	3	SL	SL	3	SL	SL	3	SL	SL	NA
		Other Finishes (effect)		SL	SL	4	SL	SL	4	SL	SL	4	SL	SL	NA
3.9 / 20	RESISTANCE TO IMPACT BY SMALL DIAMETER BALL	min. (mm.)		NA	500	NA	NA	300	NA	NA	200	NA	NA	NA	NA
		Newton (min.)		25	NA	20	25	NA	20	20	NA	15	NA	NA	NA
3.8 / 21	RESISTANCE TO IMPACT BY LARGE DIAMETER BALL	min. (mm.)		1500	1250	800	1200	750	800	1000	500	600	700	400	NA
3.7 / 25	SCRATCH RESISTANCE	Grade (Not Worse Than)		3	3	3	3	3	3	2	2	2	2	2	2
3.4 / 26	RESISTANCE TO STAINING	CLEANABILITY	Rating (max.)	12	20	NA	12	20	NA	12	20	NA	12	20	NA
		Group 1 and 2 (Stain 1-10)	effect	5	NE	5	5	NE	5	5	NE	5	5	NE	NA
		Group 3 (Stain 11-15)	effect	4	M	4	4	M	4	4	M	4	4	M	NA
3.3 / 27	LIGHT RESISTANCE	Grade (Scale Gray)		5	SL	4 - 5	5	SL	4 - 5	5	SL	4 - 5	5	SL	NA
3.14 / 31 or 32	FORMABILITY	Radius (min.)		NA	NA	NA	9.5	16	18	7.5	13	14	NA	NA	NA
3.15 / 33 or 34	RESISTANCE TO BLISTERING	Time to Blister min. (t2 - t1) sec.		NA	NA	NA	15	15	15	12	12	10	NA	NA	NA
3.1.6 / 9	FLATNESS	% max.		12.0	12.0	NA	12.0	12.0	NA	12.0	12.0	NA	12.0	12.0	NA

Effect : No Effect = 5 = NE , Sligh Effect = 4 = SL , Moderate Effect = 3 = M , Severe Effect = 1-2 = S , NA = Not Apply , Nema LD.3 /2005 America , EN-438 / 2005 Europe

Limited Warranty

Limited warranty

LAMITECH warrants that its products are reasonably free of defects within industry norms and that for a period of one (1) year from date of original sale, when properly handled and fabricated will conform, within reasonable tolerances, to applicable manufacturing specifications. This warranty is extended only to the original buyers. Due to the many uses and applications to which Lamitech laminates can be applied, Lamitech cannot make any warranty with regard to the suitability for any particular use or purpose and can make no other warranties, expressed or implied, other than that which has been set forth above.

Lamitech expressly excludes any liability for damage resulting from improper manufacturing, abuse or lack of care or improper application. LAMITECH does not assume any obligation or liability arising from the sale, installation or repair, use or subsequent sale to any person or entity.

In the event of non-conformity of a laminate(s) to the specifications set forth by Lamitech in writing, the sole obligation for a remedy to the buyer shall be either to replace the laminate(s) or to refund the buyer the purchase price. Buyer assumes all risks with regard to the use of the laminate(s) or the results of the use of the laminate(s), whether used singly or in combination with other substances.

LAMITECH believes the information and recommendations provided herein to be accurate at the time of publication of this document and retains the right to modify, amend or make changes without prior notice.

Marketing Material



Chain Set



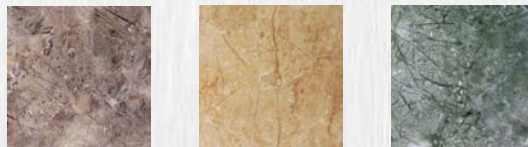
Wall Board



Counter Display



Mosaic



8" x 10" Samples



Cross-Reference

Certifications

Bureau Veritas Quality International + Greenguard



Montreal • New York • Maryland • Minneapolis



QuickPikSM
Reference Guide

Available at:

1855 Hymus Blvd.
Dorval (Quebec) Canada
H9P 1J8
Tel. 514.685.2707
800.363.4979
Fax 514.685.5920
www.quinkotek.com

